

Author: Vreven

Notes:

Sample Identifier:

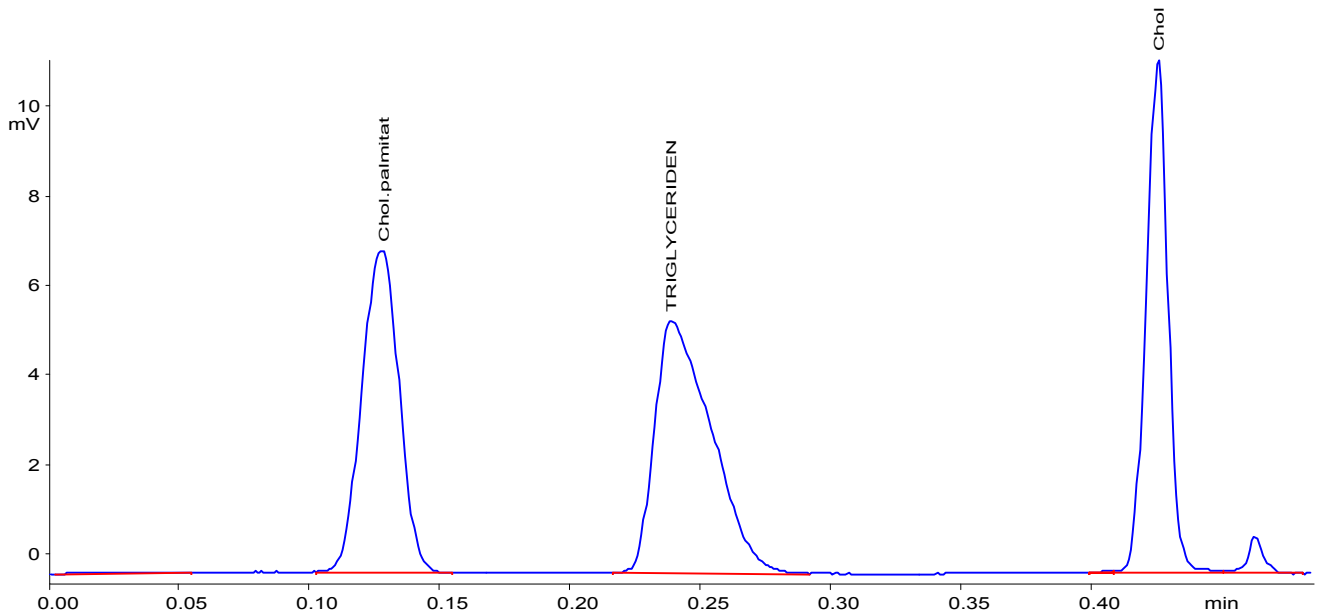
Injected on: 13.10.2000 Injected at: 12:10

Data Processing Parameters

Slice Width (msec): 50 Noise: 50
Threshold (mV): 50 Skim Ratio: 3

Parameter Files

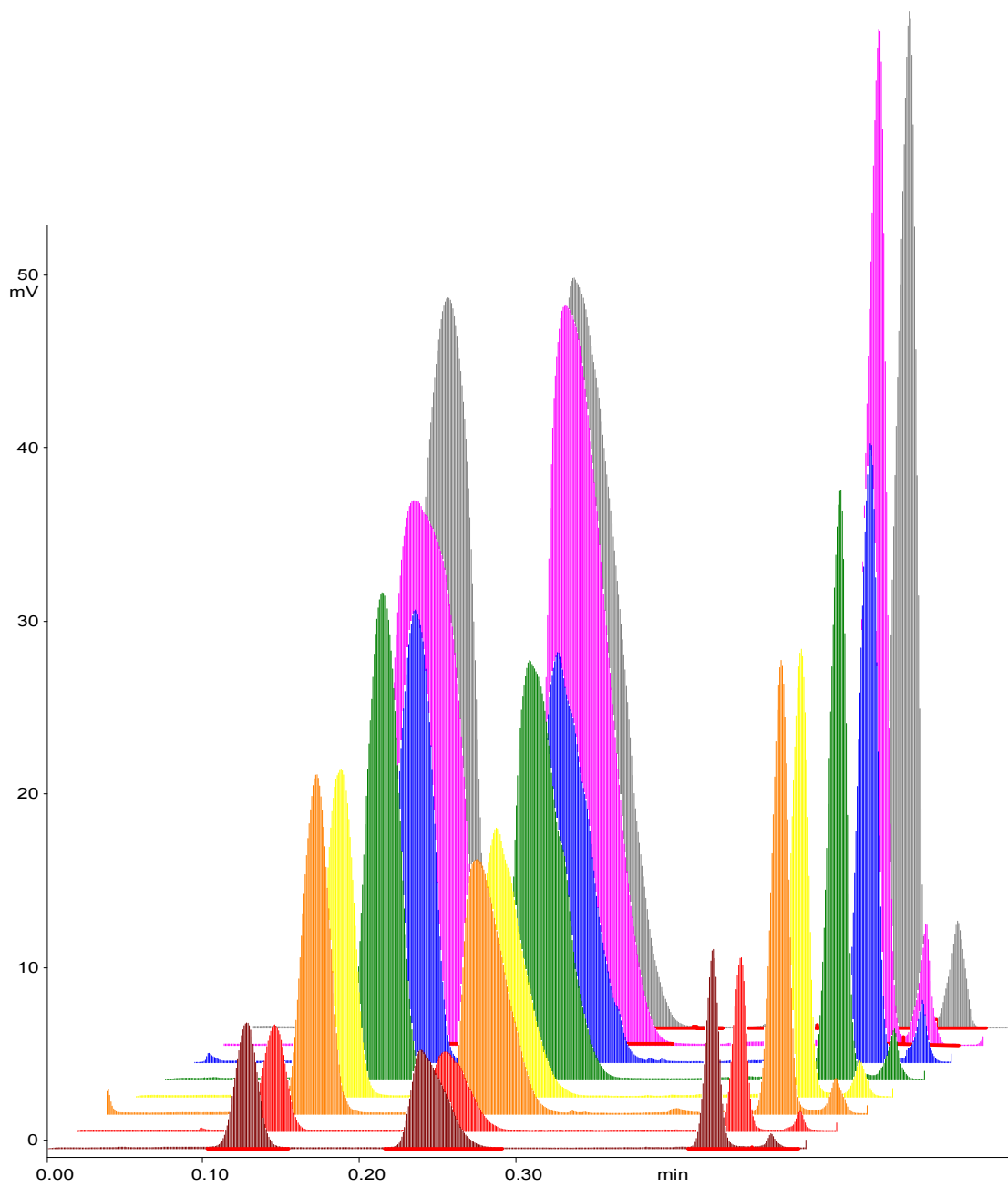
Data Handling File: LIPID Calculation-File: LIPID



Calculation Method : External Standard

Calibration Method : One Point

Peak- No	Win No.	Ret.Time (min)	Area	Resp.- Fact.	Absolute	Name
2	1	0.128	3755	1.6064E-05	0.060	Chol.palmitat
3	2	0.239	4464	1.4129E-05	0.063	TRIGLYCERIDEN
5	3	0.426	3548	1.9838E-05	0.070	Chol
			11768		0.194	



: C:\CHRSTAR2\DATA\LIPID.MET

Created by: Vreven

on:10/13/00 at:11:54:20

Run-Table

Notes : Test Procedure for calibration on
Standard Sample

Report : None
 Autosampler : N
 Normalisation : Y
 LC Procedure :
 Data Handling (1): BASF Data File (1): BASF
 Data Handling (2): Data File (2):
 Data Handling (3): Data File (3):
 Data Handling (4): Data File (4):

Sample-Table (Included - 8 Samples)

Inj.	Sample Id.	Factor	Weight	Int.Std.	Conc.Level
1	1.73 µl. Standard	1.000000e+000	0.000000	0.000000	4
	Standard: Cholesterol Palmitate 6 mg.				
	Triglyceride		8 mg.		
	Cholesterol		3 mg.		
	Dissolved in 1.0 ml. Toluene				
2	1.73 µl. Standard	1.000000e+000	0.000000	0.000000	4
3	0.80 µl. Standard	1.000000e+000	0.000000	0.000000	3
4	0.80 µl. Standard	1.000000e+000	0.000000	0.000000	3
5	0.50 µl. Standard	1.000000e+000	0.000000	0.000000	2
6	0.50 µl. Standard	1.000000e+000	0.000000	0.000000	2
7	0.20 µl. Standard	1.000000e+000	0.000000	0.000000	1
8	0.20 µl. Standard	1.000000e+000	0.000000	0.000000	1

Documentation-TableUser Details

Name : Vreven / SES
 Origin : Sample Solution Iatron
 Preparation :
 Injection vol. : See sample table

Carrier Gas

Pressure : 4-5 bar H2
 Flow Rate : 160 ml/Min
 Notes : Air 2 l./Min.

Column Details

Type : Chromarods S-III
 Size :
 Particle size :

Oven

Temperature :
 Temp. Program : Solvent: 60/10 N-Hexan/ Diethylether
 Notes :

Temperature :
Notes :

Temperature :
Split Ratio :
Notes :

End of Method File Report on 2.09.2003 at 8:09. Included 2 Pages.

Calculation File: LIPID

Created by: Vreven

on:10/13/00 at:12:00:19

Method-Table

Calculation base :Area
Method :External Standard
Minimum area/height : 100
Link to other Calc. :
Calculation Units :
No. Concentration Level : 4
Regression for Calc. (Y/N) :N
Relative Window Update (Y/N) :N
Time Window :Percent
Percent Window ±% : 5
Minimum Time Window ±min. : 0.100

Peak-Table

Time	+-%	Amt.in Std.	Resp.Fact.	Area0	Peak	Code
Level 1						
0.131	33.182	2.0000E-001	1.6109E-005	0	Chol.palmitat	
0.236	21.106	2.0000E-001	1.4129E-005	0	TRIGLYCERIDEN	
0.421	5.271	2.0000E-001	1.9556E-005	0	Chol	
Level 2						
		5.0000E-001				
		5.0000E-001				
		5.0000E-001				
Level 3						
		8.0000E-001				
		8.0000E-001				
		8.0000E-001				
Level 4						
		1.7300E+000				
		1.7300E+000				
		1.7300E+000				

Regression-Table

Time	K0	K1	K2	K3
0.131	7.5066E-002	3.4937E-005	2.6508E-011	0.0000E+000
0.236	7.5643E-002	3.0394E-005	-8.4854E-012	0.0000E+000
0.421	3.6085E-002	4.3814E-005	5.9514E-010	0.0000E+000

End of Calculation Report on 2.09.2003 at 8:10. Included 1 Page.

Data Handling File: LIPID

Created by: Vreven

on:10/13/00 at:11:59:24

Last Updated by: Vreven

on:08/30/01 at:17:50:57

Acquisition-Page

Slice Width (msec) : 50
Delay Time (min) : 0.000
Run Time (min) : 0.550
Calculation File : LIPID
Screen Scale (2^): 4
Peak Parameter : 5

Integration-Page

<u>Time</u>	<u>Function</u>	<u>Value</u>
0.000	Noise	50.000
0.000	Threshold (mV)	50

End of Data Handling Report on 2.09.2003 at 8:10. Included 1 Page.

Calculation Mode: External Standard

Standard Sample Table

Nr.	Report-File-Name
1	lipid08
2	lipid07
3	lipid06
4	lipid04
5	lipid03
6	lipid02
7	lipid01

Peak Table

Peak Name: Chol.palmitat Time Window: 0.13

Std.Amt	Area
2.0000E-001	3518
	3755
	3281
5.0000E-001	12026
	12026
8.0000E-001	20350
	20578
	20122
1.7300E+000	45810
	45073
	46547

Regression Analysis

K0 = 6.7195E-002 Coeff. of Correlation = 0.999975
 K1 = 3.6243E-005 Std. Error of Estim. = 0.004700
 K2 = 0.0000E+000
 K3 = 0.0000E+000

Peak Name: TRIGLYCERIDEN Time Window: 0.24

Std.Amt	Area
2.0000E-001	4152
	4464
	3840
5.0000E-001	13793
	13793
8.0000E-001	24082
	24573
	23590
1.7300E+000	55346
	54901
	55791

Regression Analysis

K0 = 8.2045E-002 Coeff. of Correlation = 0.999968
 K1 = 2.9801E-005 Std. Error of Estim. = 0.005267
 K2 = 0.0000E+000
 K3 = 0.0000E+000

Peak Name: Chol Time Window: 0.42

Std.Amt	Area
2.0000E-001	3365
	3525
	3205
5.0000E-001	10004
	10004
8.0000E-001	14092
	13379
	14806
1.7300E+000	28135
	27779
	28491

Regression Analysis

K0 = -6.8634E-002 Coeff. of Correlation = 0.996931
 K1 = 6.3036E-005 Std. Error of Estim. = 0.051826
 K2 = 0.0000E+000
 K3 = 0.0000E+000

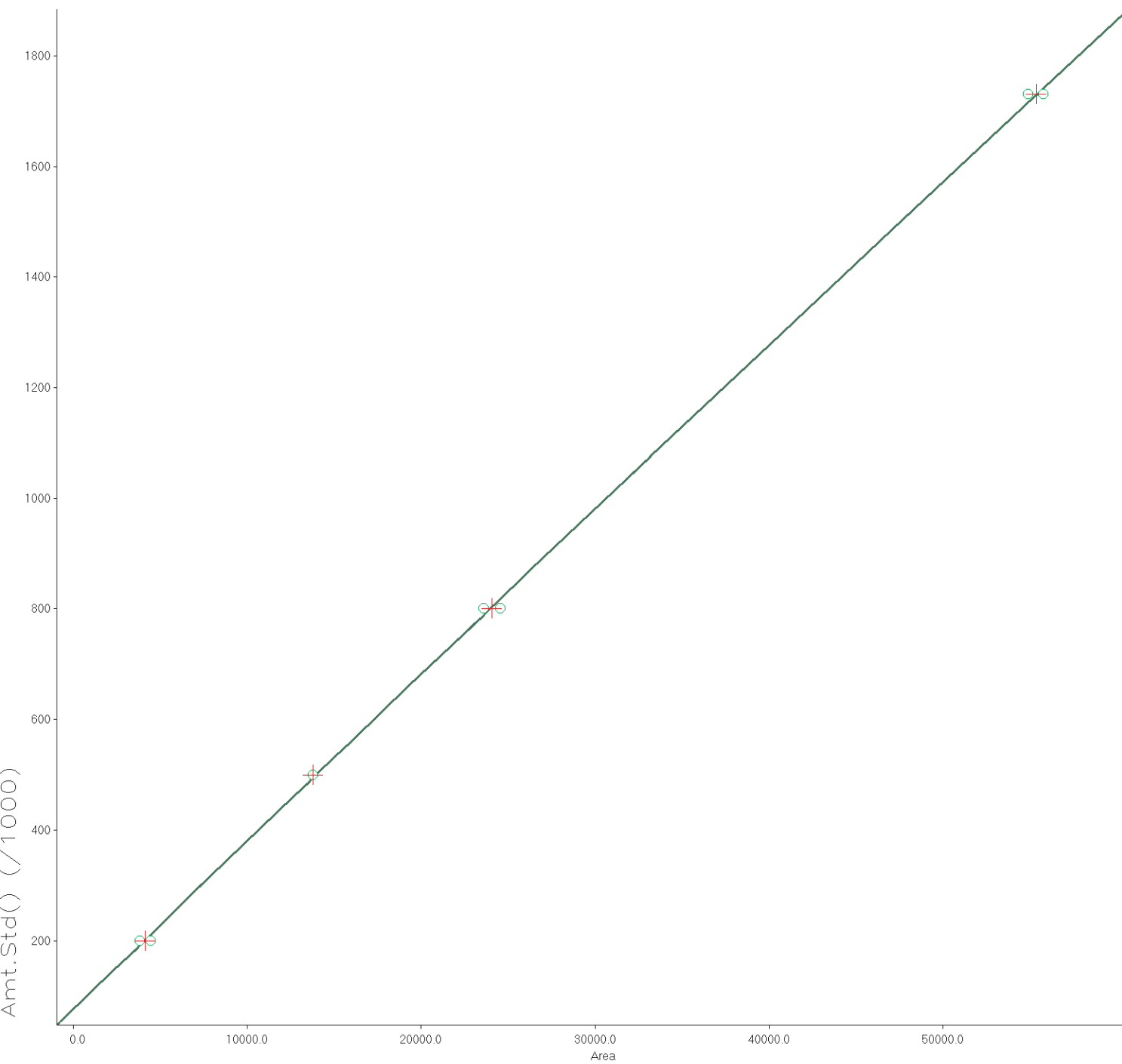
MULTILEVEL CALIBRATION

Date: 1.10.2003

Time: 10:42

Peak Name : TRIGLYCERIDEN

Time Window : 0.24



Coefficients of Least Square Fit to a QUADRATIC equation

K0 : 7.6030E-002

K1 : 3.0475E-005

K2 : -1.0782E-011

Coefficient of Determination : 0.999961

Correlation Coefficient : 0.999980

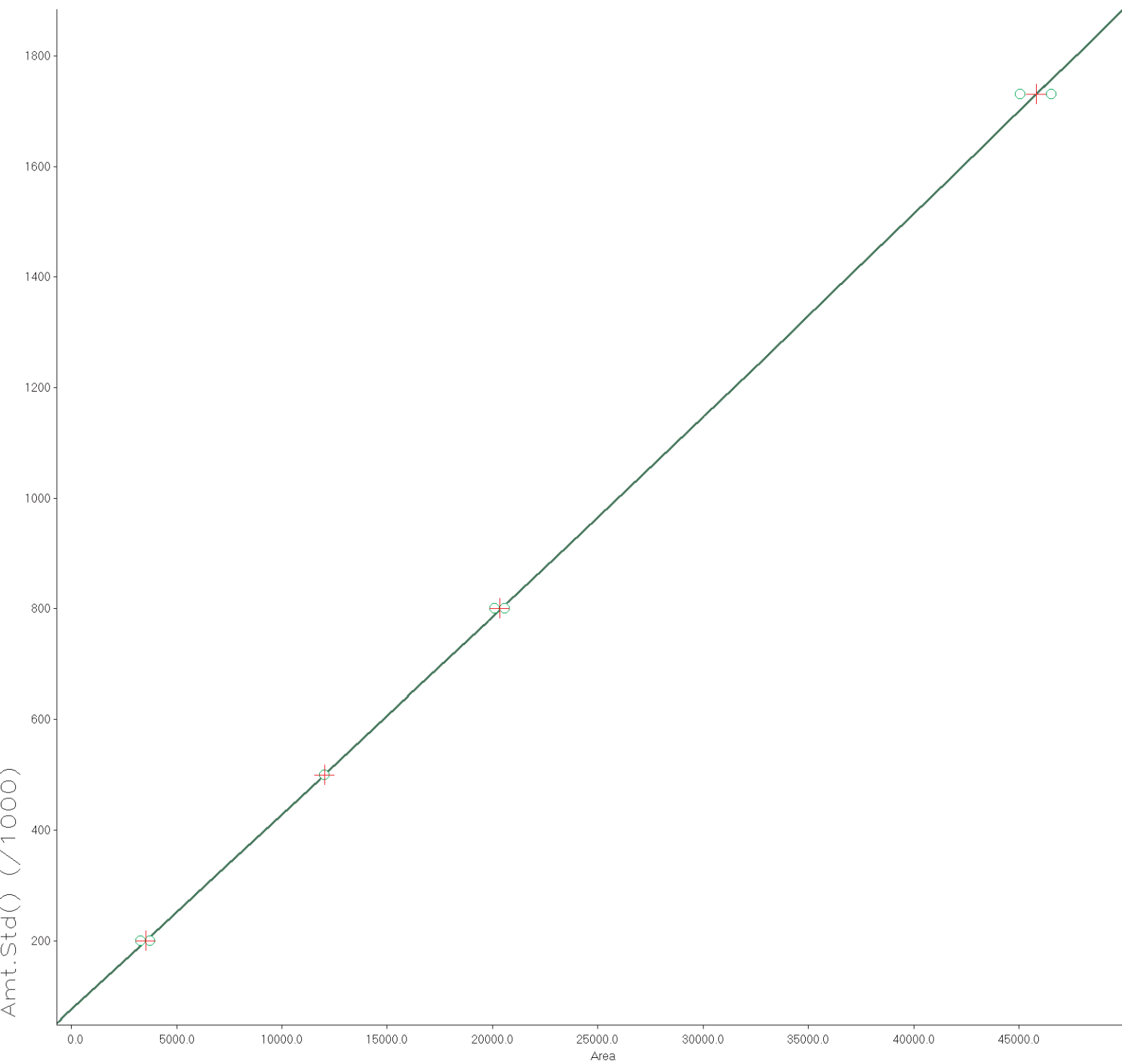
MULTILEVEL CALIBRATION

Date: 1.10.2003

Time: 10:40

Peak Name : Chol.palmitat

Time Window : 0.13



Coefficients of Least Square Fit to a QUADRATIC equation

K0 : 7.5798E-002

K1 : 3.5101E-005

K2 : 2.2056E-011

Coefficient of Determination : 0.999998

Correlation Coefficient : 0.999999

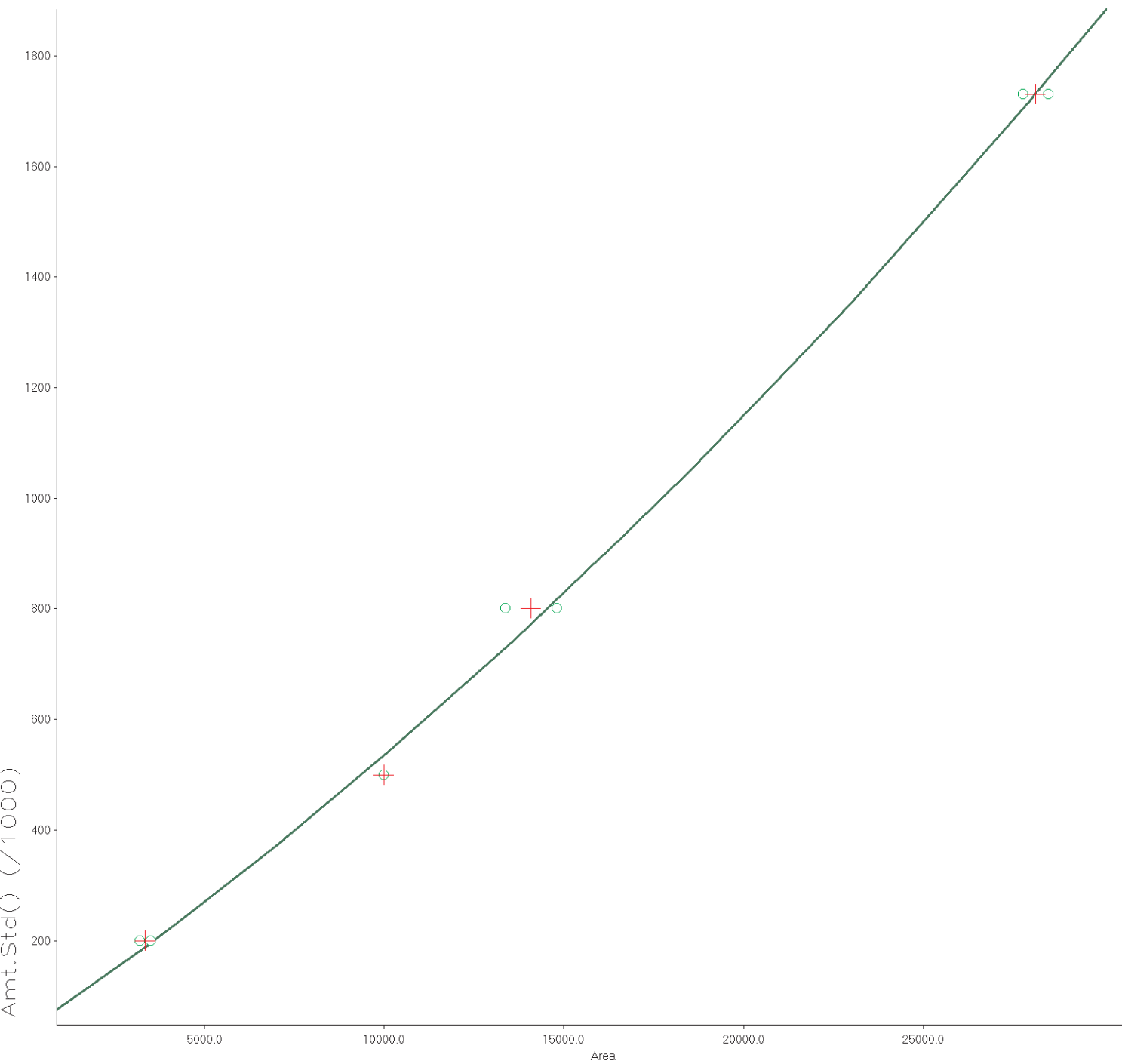
MULTILEVEL CALIBRATION

Date: 1.10.2003

Time: 10:42

Peak Name : Chol

Time Window : 0.42



Coefficients of Least Square Fit to a QUADRATIC equation

K0 : 3.4891E-002

K1 : 4.4255E-005

K2 : 5.7194E-010

Coefficient of Determination : 0.998408

Correlation Coefficient : 0.999203
